

DEPARTMENT OF FORESTRY AND FIRE PROTECTION

NORTH COAST REGION I HEADQUARTERS
135 Ridgway Avenue
Santa Rosa, CA 95401
Website: www.fire.ca.gov
(707) 576-2935



September 29, 2006

CFIP: Tichenor;05-NCR-SON-4
Martin; 05-NCR-SON-07
McCullough;05-NCR-SON-08

Sonoma County Historical Society
POB 1373
Santa Rosa, CA 95402

To whom it may concern,

I am reviewing three proposed CFIP projects depicted on the enclosed maps and project descriptions. As part of the archaeological review for these projects, CDF is notifying you that they are being proposed, and requesting information that you may have concerning any cultural resources that might exist within the project areas. This notification provides you the opportunity to disclose the existence of any Native American archaeological or cultural sites that could potentially be affected by the projects and the opportunity to submit comments on the projects.

All the projects are located in Sonoma County. The McCullough and Tichenor projects are adjacent to each other; both are approximately 1.75 miles north east of the Woodside Campground at Salt Point State Park. The Martin property is approximately one mile north of Two Rock. Two maps of each property are enclosed to provide the precise location. The first map is a general location map that displays the travel route from the nearest town. The second map provides a more detailed project location on a USGS 7.5' topographic quadrangle. This map displays the approximate boundary of the project area and includes a map legend and scale, as well as the property's legal description.

Please contact me if you have any information concerning archaeological or cultural sites within the project areas. Locations of sites you disclose will be kept confidential but disclosure to CDF is an important to ensure their identification and protection. Please feel free to contact our CDF archaeologist, Chuck Whatford, at 576-2966 if you are more comfortable disclosing information to a professional archaeologist on staff at CDF.

If you have any questions or comments, please contact me at the telephone, mail, or email address listed above. The review process and comment period will end approximately one month from today, so I would appreciate hearing from you prior to that date.

Sincerely,

A handwritten signature in black ink that reads "Jill Butler".

JILL BUTLER
STAFF FORESTER



PRUNUSKE CHATHAM, INC.

**CFIP PROJECT DESCRIPTION
MARTIN RANCH, STEMPLE CREEK
LAND CONSERVATION & HABITAT IMPROVEMENT
February 2006**

In 1995, the Martins, Students And Teachers Restoring a Watershed (STRAW), Marin and Sonoma County Resource Conservation Districts, Prunuske Chatham, Inc. (PCI), Americorps, and others worked together to secure funding and labor forces to restore habitat for the endangered freshwater shrimp as well as other wildlife species along reaches of Stemple Creek. The key project elements were fencing and planting with native vegetation. Additional benefits were erosion control and subsequent water quality improvement as well as hands-on environmental education for the students.

On the Marin property, a section of Stemple Creek, approximately 2600 feet long was fenced and planted. See attached CFIP application and USGS topo map. The planting mix was primarily native willows as well as oaks, elderberries, boxelders, and others. The planting was highly successful, and the number of bird species has significantly increased as documented by the Pt. Reyes Bird Observatory.

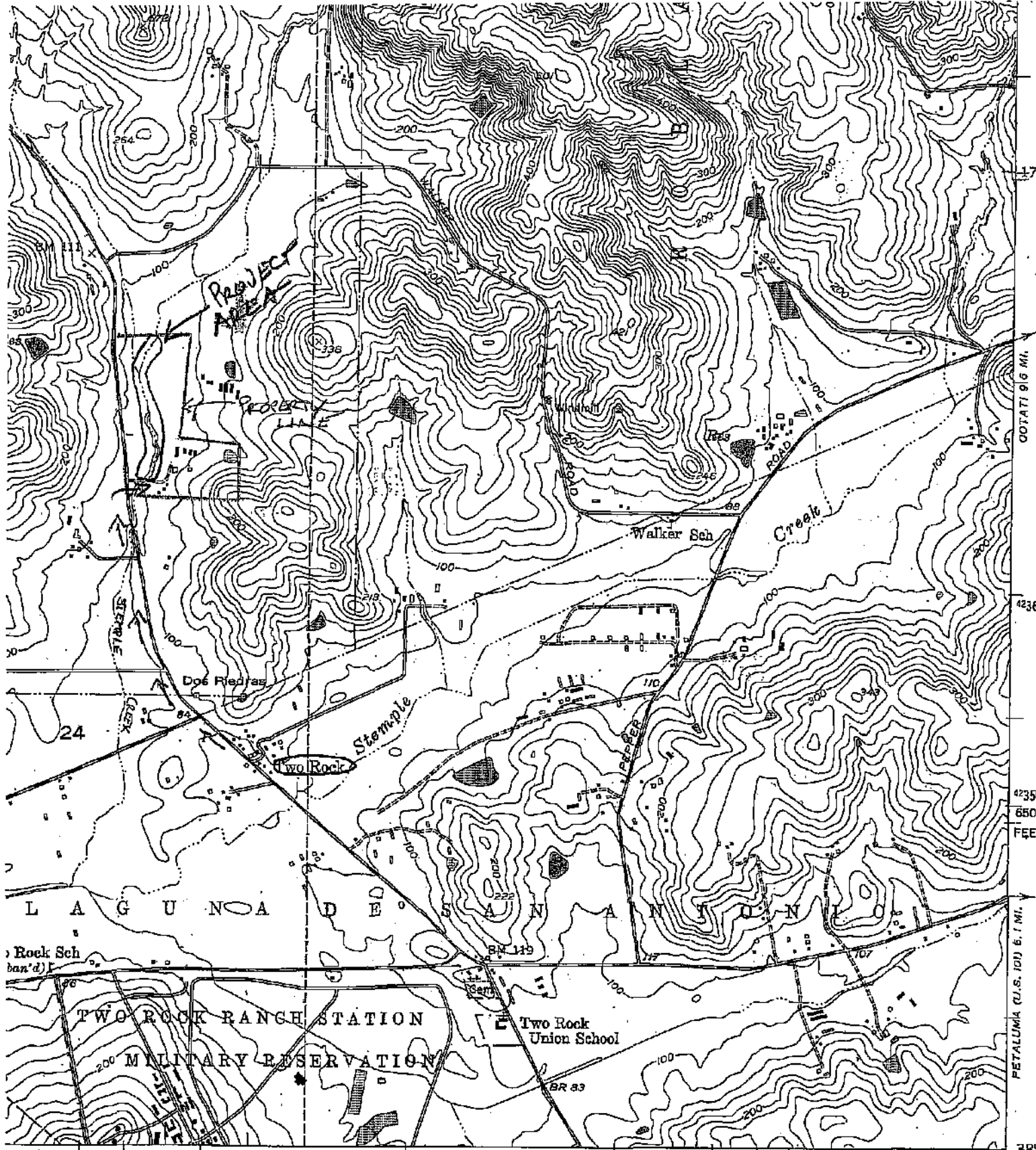
The willow planting was so successful that now, ten years later, the willows are in need of thinning. A few clusters have slid into the creek channel. Most of the willows are multi-stem trees with branches or stems encroaching on the channel. These are starting to catch debris in high flows which contribute to bank scouring and erosion.

Objective

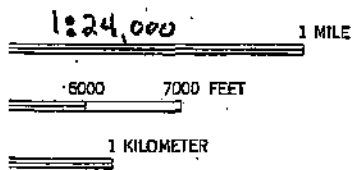
The proposed land conservation practice is to thin and prune up to 50% of the willow stems per cluster to remove trees and branches that might form debris jams and also to form up trees that will shade the watercourse without encroaching on channel capacity. The clumps that have slid into the channel will be pulled out.

Method

Willow clumps to be removed will be marked by the RPF. A sample area of stems to be removed will also be marked. No heavy equipment will be within the stream channel. Most of the work will be accomplished by hand saws and chain saws.



7 R. 9 W. 47'30" R. 6 W. 920 1 350 000 FEET (3) 921,000 M. 122°45' 38°1



MARTIN RANCH



T5N, R9W Section 13
 ROAD CLASSIFICATION
 Heavy-duty _____ Light-duty _____
 Medium-duty _____ Unimproved dirt _____
 ○ State Route

TWO ROCK, CALIF.
 SB/4 SEBASTOPOL 15' QUADRANGLE

DURS

PROJECT DESCRIPTION
Nedian Forest

Management Plan The owners of the Nedian Forest have retained our services to revise their Forest Management Plan for their 150 acre forest located in Sonoma County. In revising this Management Plan, an inventory will be done to assess standing volume, and growth and yield capabilities of the forest. Approximately 50 fixed radius 1/5 acre plots will be established. This represents a cruise intensity of approximately 6.6%.

This Management Plan will also address erosion control, harvest management, planting, pruning and thinning, and fish and wildlife habitat improvements.

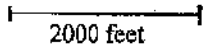
Planting

Approximately 17 acres will be planted in the winter of 2006-07 for increasing conifer trees and helping to restore historic forest composition. Approximately 300 2-year old redwood bare root stock will be planted per acre. Douglas-fir will not be planted, as in this part of Sonoma County, it readily seeds in. This planting/interplanting will follow an anticipated timber harvest in 2006. Planting will not be necessary to satisfy forest practice as this harvest is a light selective thinning. Openings created by this harvest and the removal of hardwood, will be planted on a 12 foot by 12 foot spacing. We will plant approximately 5,000 trees.





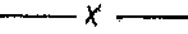

Nedrian Forest
Sonoma County, California

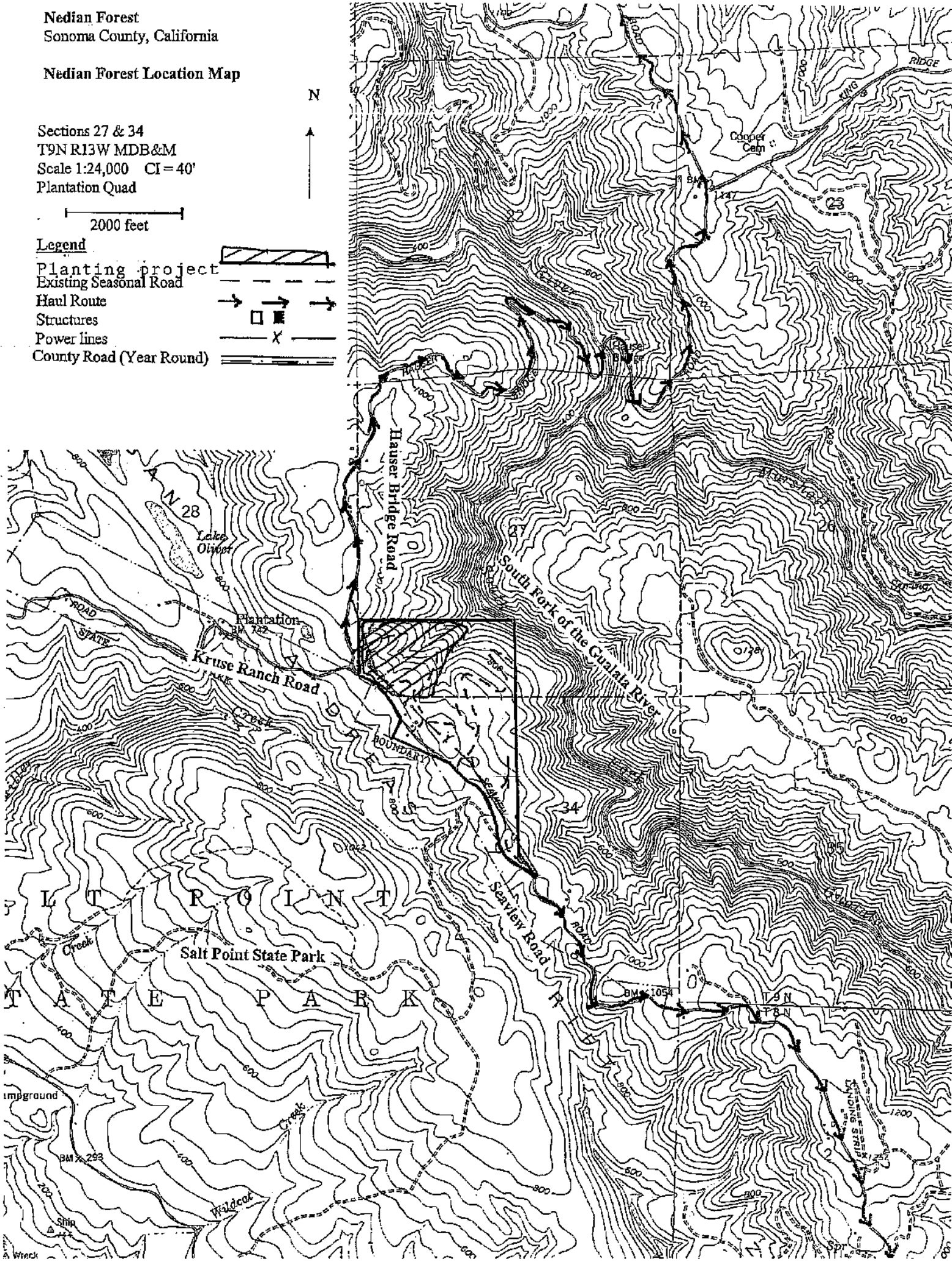
Nedrian Forest Location Map

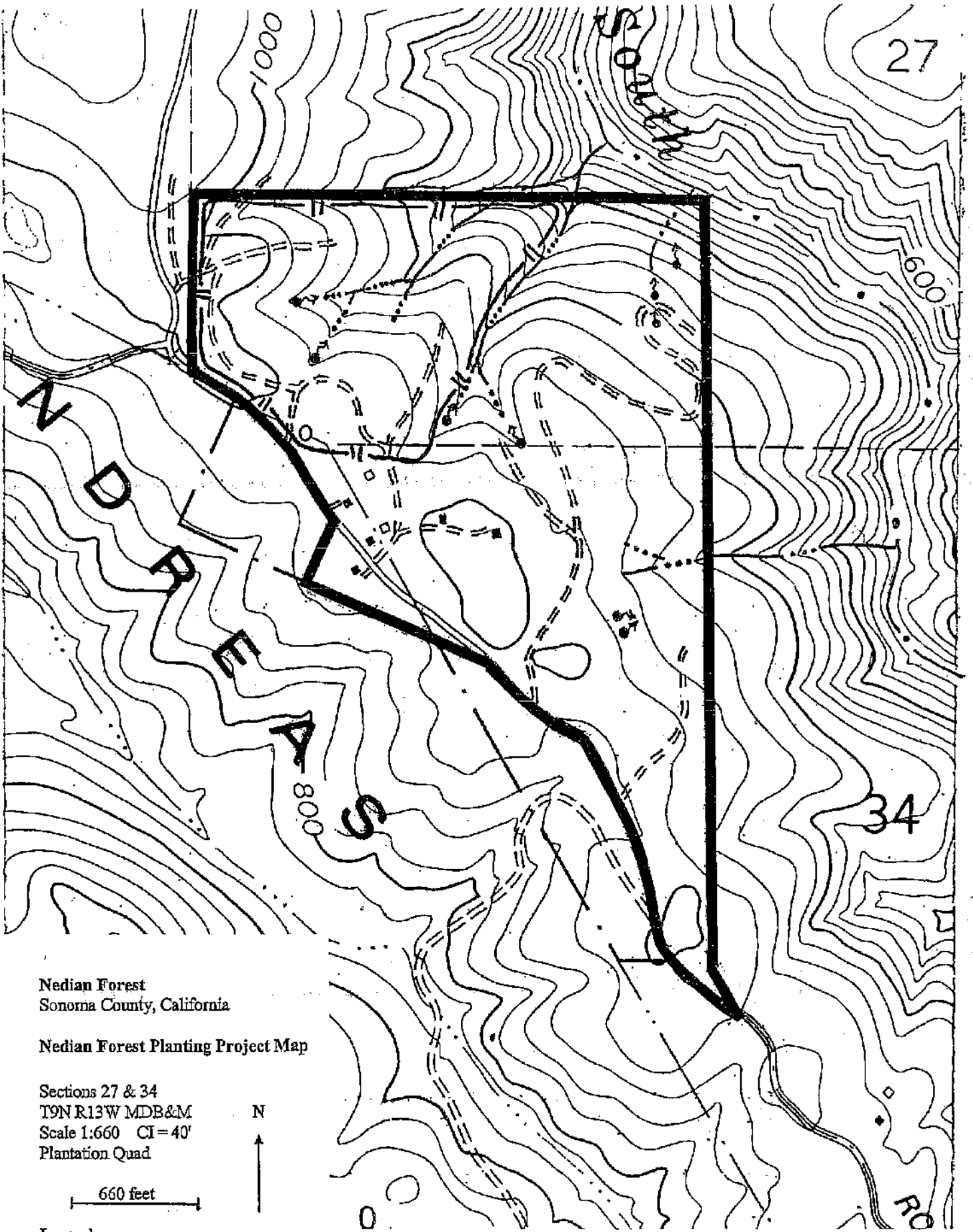
Sections 27 & 34
T9N R13W MDB&M
Scale 1:24,000 CI=40'
Plantation Quad



Legend

- Planting project 
- Existing Seasonal Road 
- Haul Route 
- Structures 
- Power lines 
- County Road (Year Round) 

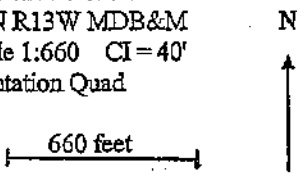




Nedian Forest
Sonoma County, California

Nedian Forest Planting Project Map

Sections 27 & 34
T9N R13W MDB&M
Scale 1:660 CI=40'
Plantation Quad



Legend
Proposed Planting Boundary — || —

PROJECT DESCRIPTION
TICHENOR

Management Plan The owners of the Tichenor Forest have retained our services to create a Forest Management Plan for their 66 acre forest located in Sonoma County. In creating this Management Plan, an inventory will be done to assess standing volume, and growth and yield capabilities of the forest. Approximately 20 fixed radius 1/5 acre plots will be established. This represents a cruise intensity of approximately 6%.

This Management Plan will also address erosion control, harvest management, planting, pruning and thinning, and fish and wildlife habitat improvements. Erosion control on this property is of major concern, as much of the property is in poor shape due to previous management activities.

Planting/Site Preparation (8 acres net)

Approximately 24 acres gross will be planted in the winter of 2006-07 for increasing conifer trees and helping to restore historic forest composition. Approximately 300 2-year old redwood bare root stock will be planted per acre. Douglas-fir will not be planted, as in this part of Sonoma County, it readily seeds in. This planting/interplanting will follow an anticipated timber harvest in 2006. Planting will not be necessary to satisfy forest practice as this harvest is a light selective thinning. Upon completion of logging, the area will have an excess of 100 square feet of basal area of conifers. This exceeds the stocking requirements of the Forest Practice Rules. Openings created by this harvest and the removal of hardwood, will be planted on a 12 foot by 12 foot spacing. The light selective harvest and associated cleanup (brush crushing and lopping) will create many openings ideal for tree planting. These openings will be planted with groves of large bare root redwoods from a local seed source. The planting spots will be cleared with a hoedad(site prep) prior to planting.

RPF Supervision (16 acres)

The RPF will layout and supervise the tree planting described above.

SEAVIEW

34

TICHENOR

Tichenor Forest
Sonoma County, California

Planting Project Map

Sections 34
T9N R13W MDB&M
Scale 1"=500' CI=40'
Plantation Quad

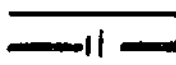
500 Feet

Legend

Property Boundary

Planting Project Area

N



Edward A. Tunheim
Consulting Forester
October 2006